

Fields of Application

MetaLine Series 700



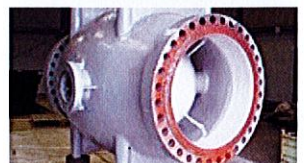
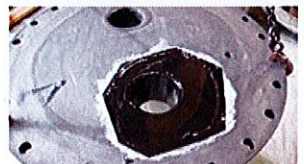
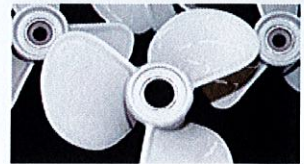
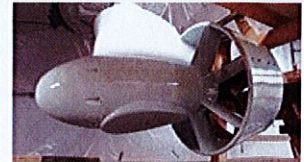
MetaLine Series 700 is used, amongst others, on board of the following container ships, bulk carriers, car ferries or fishing factory vessels:

Vessel *Cormone*
Vessel *Togo*
Vessel *St. Anna*
Vessel *Berge Danuta*
Vessel *Toronto*
Vessel *E.R. Denver*
Vessel *E.R. Savannah*
Vessel *E.R. Dallas*
Vessel *E.R. Beijing*
Vessel *Konstanz*
Vessel *E.R. Amsterdam*
Vessel *E.R. Berlin*
Vessel *E.R. Kobe*
Vessel *E.R. Santiago*
Vessel *E.R. Felixstowe*
Vessel *Independent Accord*
Vessel *Logos Hope*
Vessel *Antonio Nores*
Vessel *Hermigon*
Vessel *Anapurna*
Vessel *Maya Rickmers*
Vessel *Vicki Rickmers*
Vessel *Cathrine Rickmers*
Vessel *Pacific Resolution*
Vessel *Sabine Rickmers*
Vessel *Tsingtao Express*
Vessel *E.R. Canada*
Vessel *E.R. India*
Vessel *E.R. Los Angeles*

Beyond mentioning the ship names, it is not possible for us to publish more details about the work carried out since we have precise agreements with the shipping companies and ships' owners not to do so for advertising purposes. We appreciate your understanding.

MetaLine® Series 700 - wear protection system for the repair of damaged rubber linings or elastomeric in-situ coating of metal structures

- cooling water pumps
- seawater pipes
- ballast water treatment systems
- bulwarks
- anchor lockers
- hatch seals
- ship propellers
- buoys
- fenders
- buoyancy pipes
- seawater filters
- thrusters
- kort nozzles
- valves
- fire fighting water systems
- propulsion drives
- aluminum hulls
- dredging pumps
- rudder blades
- steven supports
- stabilizers
- underwater antennas
- cold storage cells
- fish processing areas
- strainers
- fins
- valves and fittings
- jetski & water sports gear



Wear protection

Corrosion protection

Shock absorption

Cavitation protection

Antifouling performance

Noise deadening

